



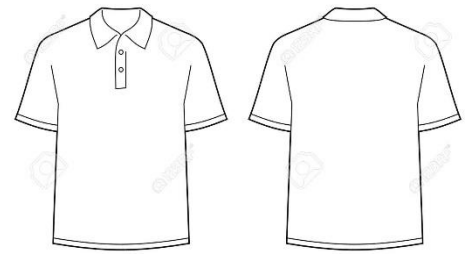
***LLOYD ESTATES ELEMENTARY***  
***MANDATORY SCHOOL UNIFORMS***

**GIRLS**

**TOPS:** *Gold, Yellow, Navy Blue, Light Blue, White Polo Style (must have a collar)*

**BOTTOMS:** *Shorts, Skirts, Skorts, Long Pants Navy Blue or Khaki (Tan)*

**DRESSES/ JUMPERS** *Navy blue, Plaid (Blue & White), Khaki, Tan*



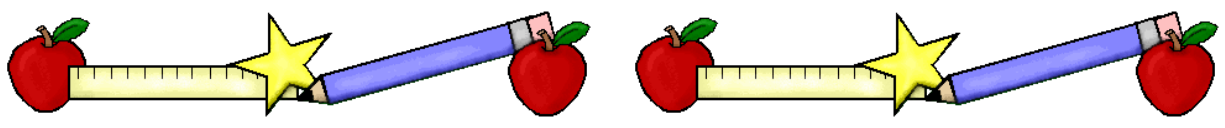
Polo Shirt



**BOYS**

**TOPS:** *Gold, Yellow, Navy Blue, Light Blue, White Polo Style (must have a collar)*

**BOTTOMS:** *Shorts, Long Pants Navy Blue or Khaki (Tan)*



**T-SHIRTS AND JEANS  
 ARE NEVER  
 PERMITTED!**

